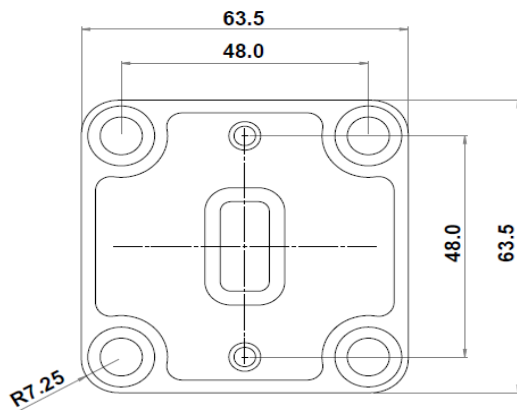
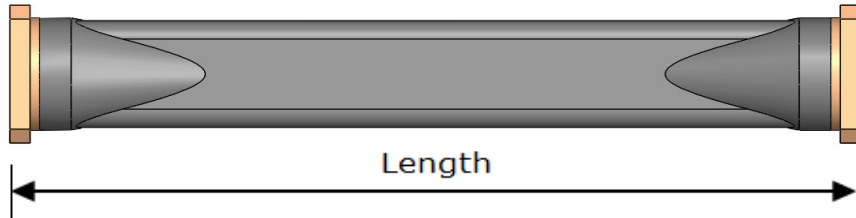
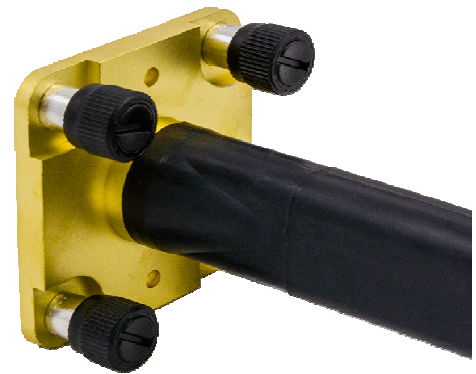


flexiguide

Product Specification



Flange Type



Part Number:

FT17-0625

Description

Product Type:

Flexible Twistable Waveguide

Waveguide Size:

WG17 / WR75 / R120

Flange Type (Both Ends):

Ku Band Quick Release (Male)

Length:

1500 mm / 59.1 inches

Length Tolerance:

+/- 1.5% or +/- 2 mm which ever is the greater

Flange Material / Plating:

Brass / No Plating

Accessories:

Hand Operated Screws

Mechanical Specifications

Jacket Material:

Silicone Rubber

Core Material:

Silver Plated Brass

Max. Recommended Operating Pressure:

15 psi / 1.05 kg/cm²

Min. E-Plane Bend Radius (Static):

54 mm / 2.1 inches

Min. H-Plane Bend Radius (Static):

108 mm / 4.3 inches

Maximum Twist (Static):

365 Deg/m or 111 Deg/ft

Min. E-Plane Bend Radius (Repeated):

216 mm / 8.5 inches

Min. H-Plane Bend Radius (Repeated):

432 mm / 17 inches

Maximum Twist (Repeated):

92 Deg/m or 28 Deg/ft

Electrical Specifications

Frequency Range:

10.0 - 15.0 GHz

Insertion Loss:

0.75 dB Maximum

Return Loss:

25.4 dB Minimum

Peak Power:

180 kW Maximum

Average Power:

750 W Maximum

Environmental Performance

Temperature Range:

-70 to +150°C

UV Resistance:

Excellent

Ozone Resistance:

Excellent

I.P. Rating

IP68

Salt Mist:

BS EN 60068-2-52

(Method Kb - Extreme Marine Environments)